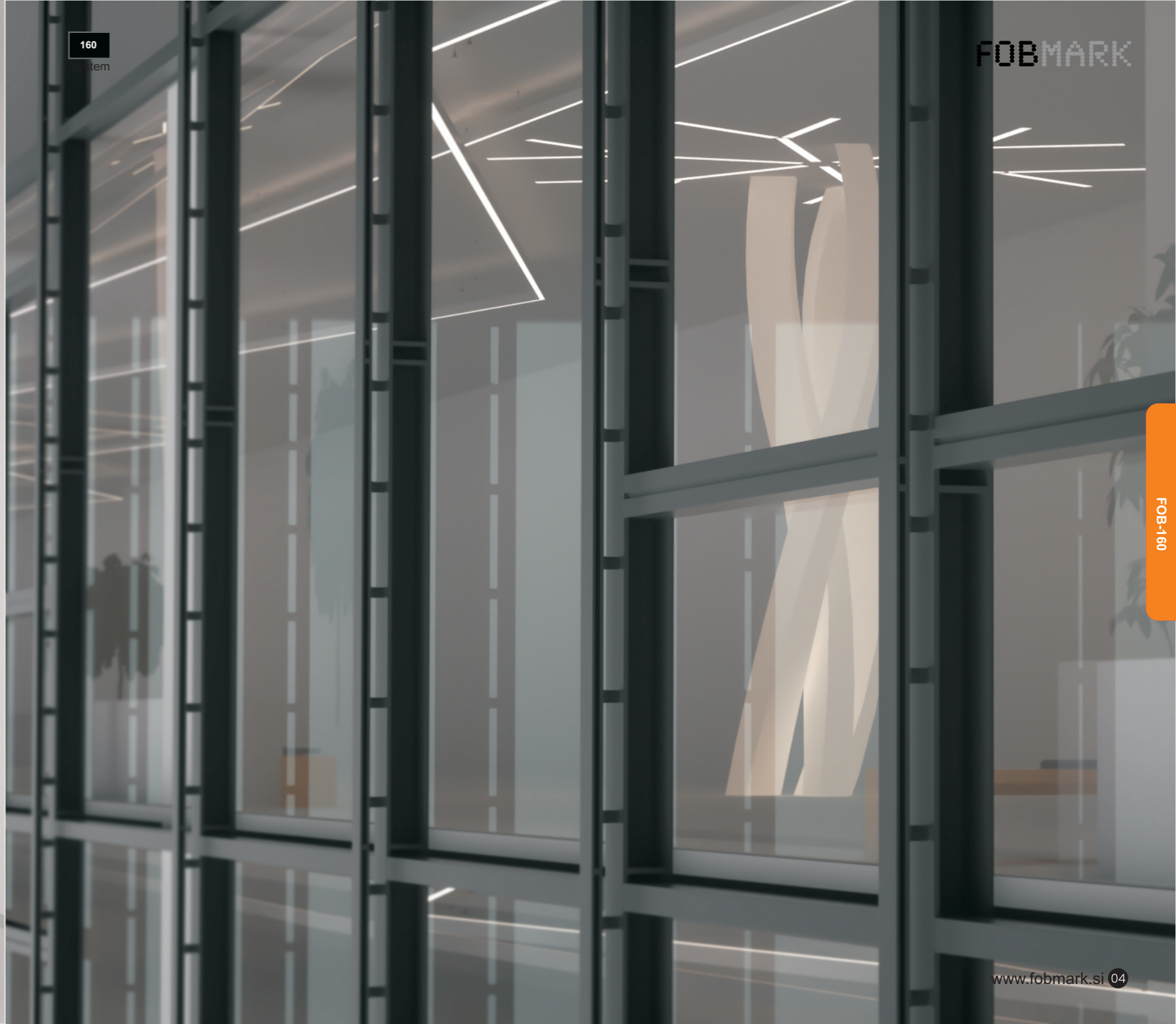


160 Linear lighting system

160 Linear lighting System is a powerful system that features a modular design, which makes it very flexible and allows it to be quickly adapted to any length or shape. Moreover, it has a fast connection design which make it only take less than 10 seconds to join two linear lights together. The system has various installation options, including suspended, surface-mounted, trim recessed, trimless recessed, wall-mounted, and track mounted. It also offers two types of diffusers, opal and micro-prismatic, which help to achieve UGR<19, and both diffusers can comes in rolls of 25m as option. The system's zero light leakage design ensures that there is no light leakage, making it perfect for any lighting application. In summary, Unleash your imagination and create lighting designs beyond your wildest dreams by I60 linear lighting system.



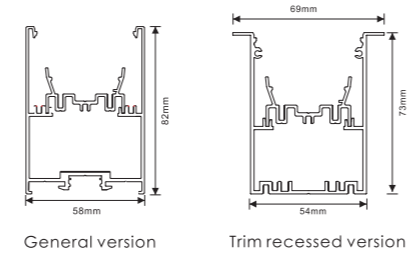
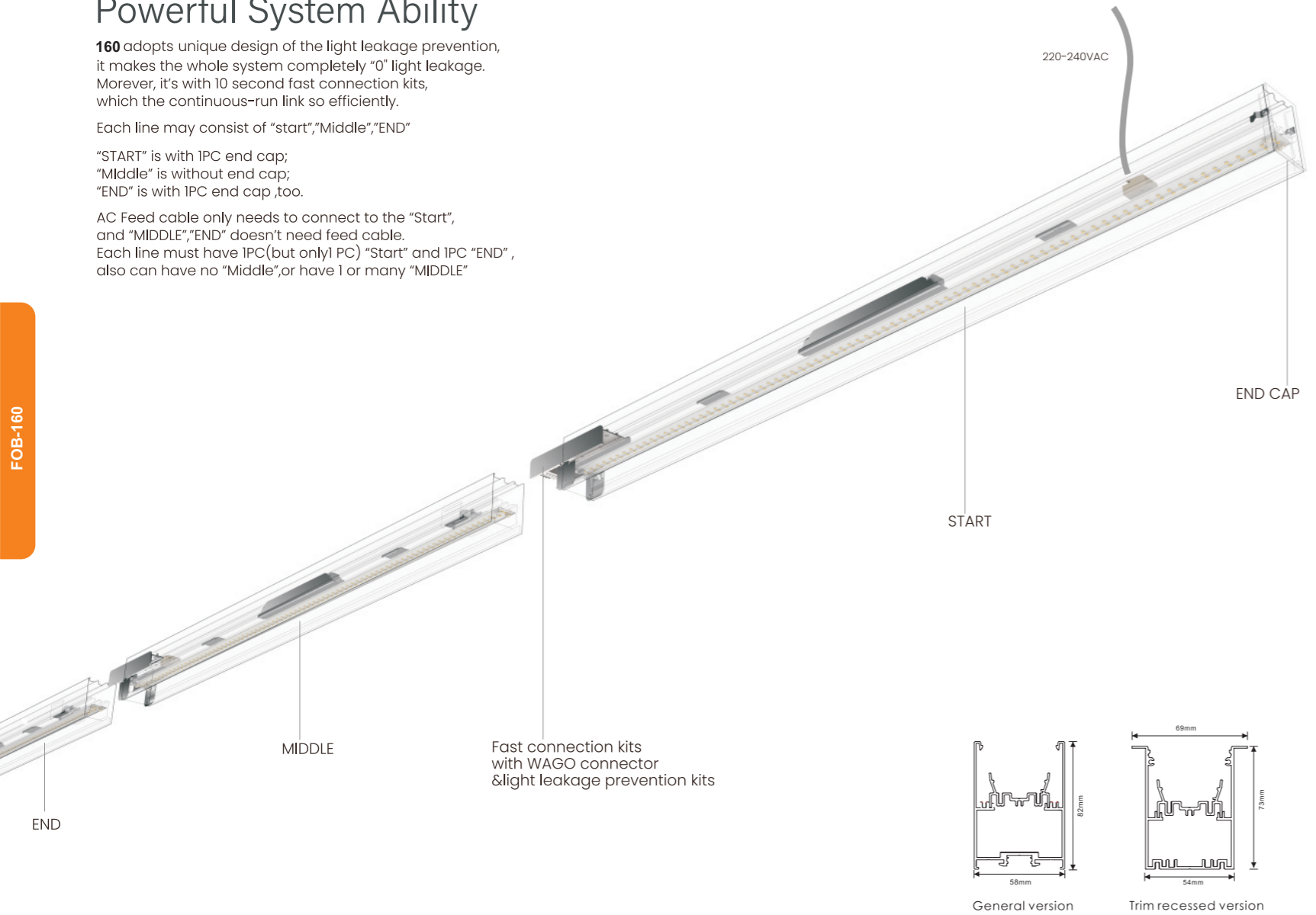
Powerful System Ability

160 adopts unique design of the light leakage prevention, it makes the whole system completely "0" light leakage. Moreover, it's with 10 second fast connection kits, which the continuous-run link so efficiently.

Each line may consist of "start","Middle","END"

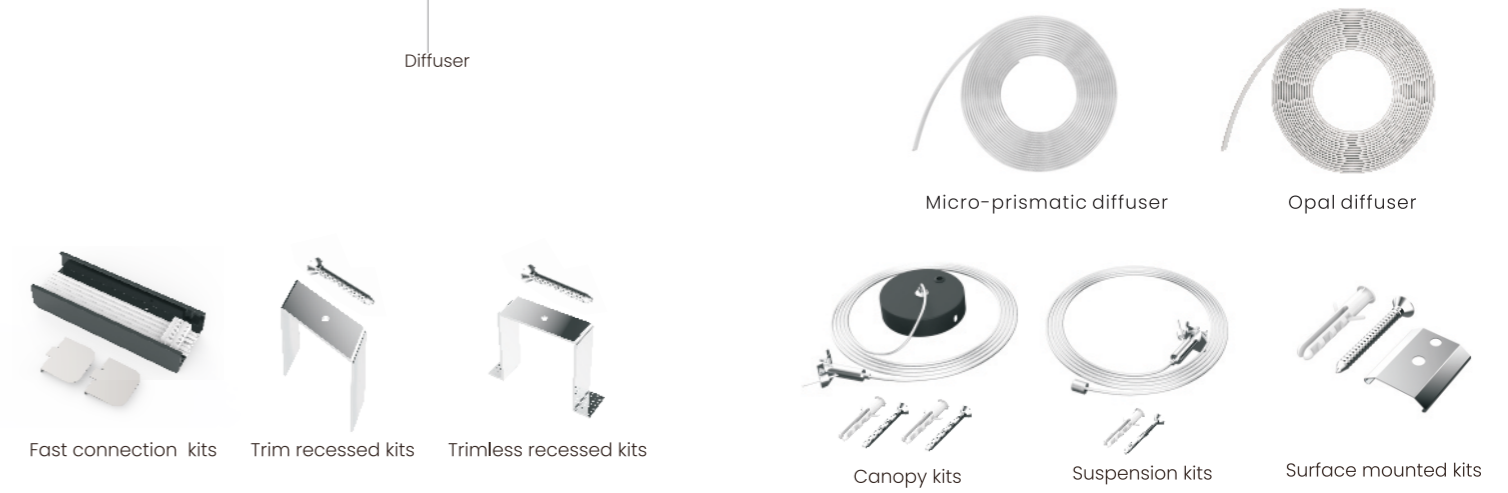
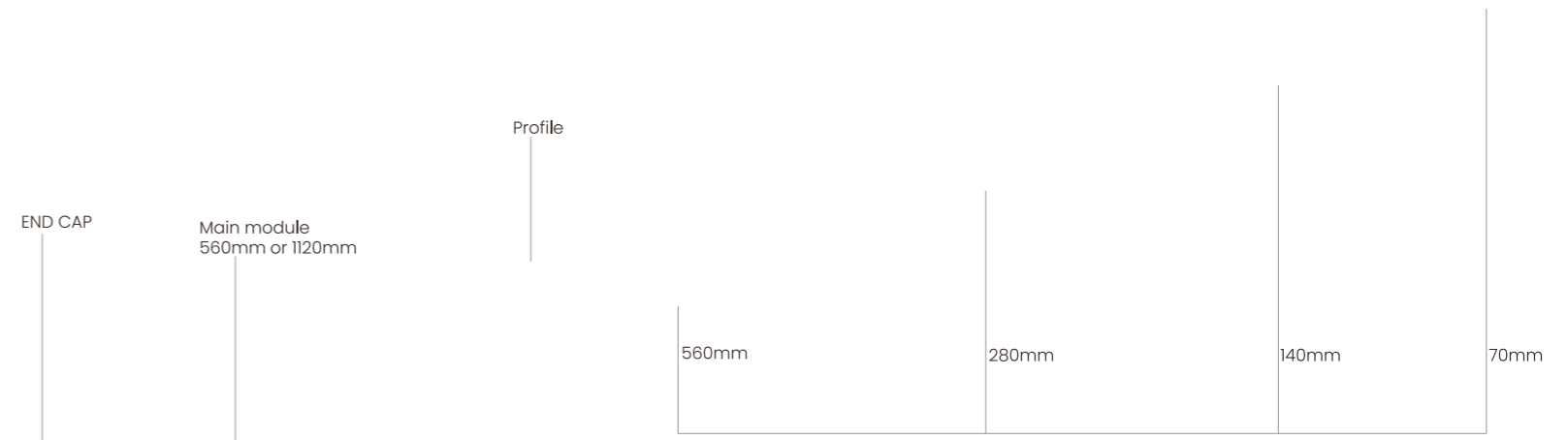
"START" is with IPC end cap;
"Middle" is without end cap;
"END" is with IPC end cap ,too.

AC Feed cable only needs to connect to the "Start", and "MIDDLE","END" doesn't need feed cable. Each line must have IPC (but only 1 PC) "Start" and IPC "END", also can have no "Middle",or have 1 or many "MIDDLE"



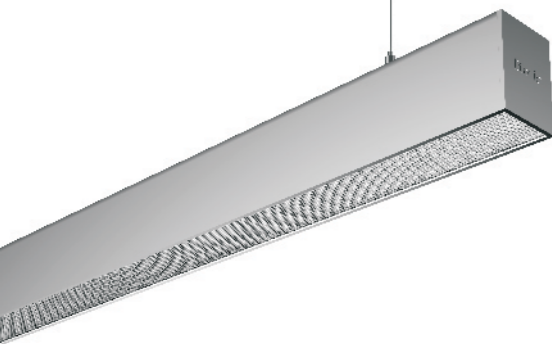
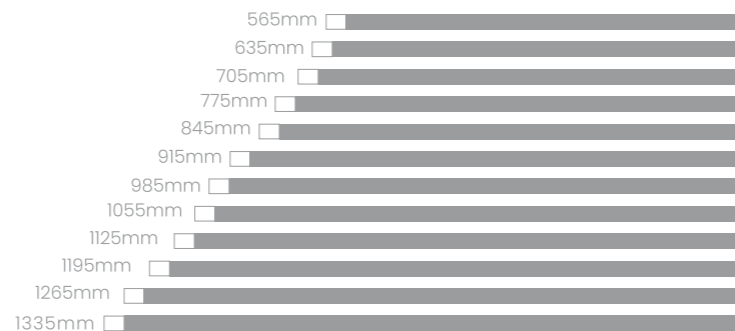
Modular Design

160 adopts unique modular design, the shortest module is 70mm. Thanks to the modular design, it makes so flexible to make the linear into any different lengths, and shapes. Moreover, it helps us to easy to manage the inventory, and make us be able to delivery finished linear lights according to customers' the projects need so fast.

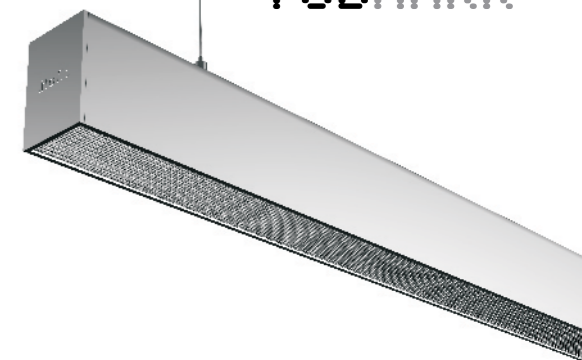
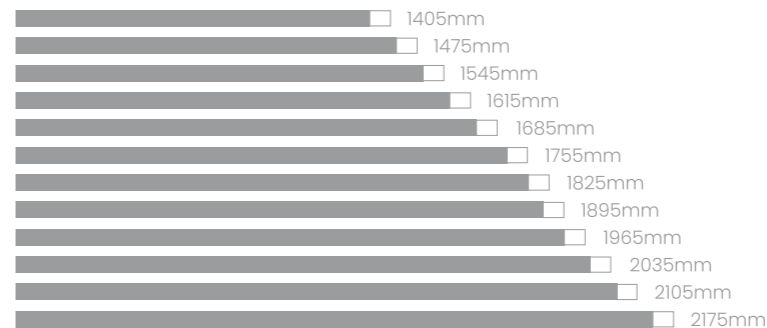


FOB-160

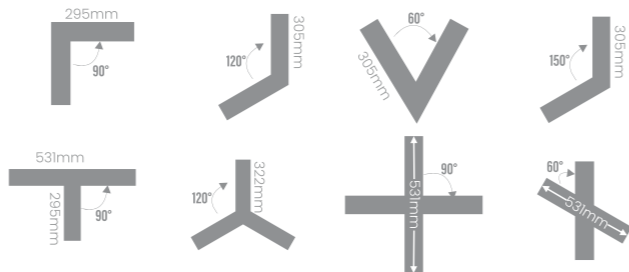
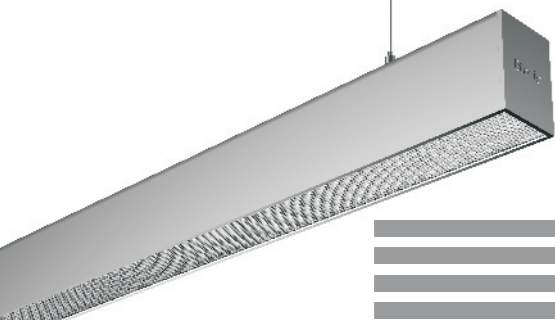
FOB-160



Item	Length	Section size	Link	Voltage	Power	System Efficacy	Color	Optics	LEDs	CCT	CRI	Color consistency	UGR	Driver	Control
160-565	565mm	W58xH82mm	single light / linkable	220-240VAC	10-18W	115lm/w	White/Black/Silver grey	Opal/Micro-prismatic	Osram	3000K/4000K/5700K or TW 3000K-5700K	CRI>80 / CRI>90	MacAdam step 3	UGR<22/UGR<19	Osram	ON-OFF
160-635	635mm	W58xH82mm	single light / linkable	220-240VAC	11.5-20.5W	115lm/w	White/Black/Silver grey	Opal/Micro-prismatic	Osram	3000K/4000K/5700K or TW 3000K-5700K	CRI>80 / CRI>90	MacAdam step 3	UGR<22/UGR<19	Osram	ON-OFF
160-705	705mm	W58xH82mm	single light / linkable	220-240VAC	13-22.5W	115lm/w	White/Black/Silver grey	Opal/Micro-prismatic	Osram	3000K/4000K/5700K or TW 3000K-5700K	CRI>80 / CRI>90	MacAdam step 3	UGR<22/UGR<19	Osram	ON-OFF
160-775	775mm	W58xH82mm	single light / linkable	220-240VAC	14-25W	115lm/w	White/Black/Silver grey	Opal/Micro-prismatic	Osram	3000K/4000K/5700K or TW 3000K-5700K	CRI>80 / CRI>90	MacAdam step 3	UGR<22/UGR<19	Osram	ON-OFF
160-845	845mm	W58xH82mm	single light / linkable	220-240VAC	15.5-29W	115lm/w	White/Black/Silver grey	Opal/Micro-prismatic	Osram	3000K/4000K/5700K or TW 3000K-5700K	CRI>80 / CRI>90	MacAdam step 3	UGR<22/UGR<19	Osram	ON-OFF/DALI 2 /DALI DT8(tunable white)
160-915	915mm	W58xH82mm	single light / linkable	220-240VAC	17-29.5W	115lm/w	White/Black/Silver grey	Opal/Micro-prismatic	Osram	3000K/4000K/5700K or TW 3000K-5700K	CRI>80 / CRI>90	MacAdam step 3	UGR<22/UGR<19	Osram	ON-OFF/DALI 2 /DALI DT8(tunable white)
160-985	985mm	W58xH82mm	single light / linkable	220-240VAC	18-31.5W	115lm/w	White/Black/Silver grey	Opal/Micro-prismatic	Osram	3000K/4000K/5700K or TW 3000K-5700K	CRI>80 / CRI>90	MacAdam step 3	UGR<22/UGR<19	Osram	ON-OFF/DALI 2 /DALI DT8(tunable white)
160-1055	1055mm	W58xH82mm	single light / linkable	220-240VAC	19.5-34W	115lm/w	White/Black/Silver grey	Opal/Micro-prismatic	Osram	3000K/4000K/5700K or TW 3000K-5700K	CRI>80 / CRI>90	MacAdam step 3	UGR<22/UGR<19	Osram	ON-OFF/DALI 2 /DALI DT8(tunable white)
160-1125	1125mm	W58xH82mm	single light / linkable	220-240VAC	20.5-36W	115lm/w	White/Black/Silver grey	Opal/Micro-prismatic	Osram	3000K/4000K/5700K or TW 3000K-5700K	CRI>80 / CRI>90	MacAdam step 3	UGR<22/UGR<19	Osram	ON-OFF/DALI 2 /DALI DT8(tunable white)
160-1195	1195mm	W58xH82mm	single light / linkable	220-240VAC	22-38.5W	115lm/w	White/Black/Silver grey	Opal/Micro-prismatic	Osram	3000K/4000K/5700K or TW 3000K-5700K	CRI>80 / CRI>90	MacAdam step 3	UGR<22/UGR<19	Osram	ON-OFF/DALI 2 /DALI DT8(tunable white)
160-1265	1265mm	W58xH82mm	single light / linkable	220-240VAC	23-40.5W	115lm/w	White/Black/Silver grey	Opal/Micro-prismatic	Osram	3000K/4000K/5700K or TW 3000K-5700K	CRI>80 / CRI>90	MacAdam step 3	UGR<22/UGR<19	Osram	ON-OFF/DALI 2 /DALI DT8(tunable white)
160-1335	1335mm	W58xH82mm	single light / linkable	220-240VAC	24.5-43W	115lm/w	White/Black/Silver grey	Opal/Micro-prismatic	Osram	3000K/4000K/5700K or TW 3000K-5700K	CRI>80 / CRI>90	MacAdam step 3	UGR<22/UGR<19	Osram	ON-OFF/DALI 2 /DALI DT8(tunable white)



Item	Length	Section size	Link	Voltage	Power	System Efficacy	Color	Optics	LEDs	CCT	CRI	Color consistency	UGR	Driver	Control
160-1405	1405mm	W58xH82mm	single light / linkable	220-240VAC	26-45W	115lm/w	White/Black/Silver grey	Opal/Micro-prismatic	Osram	3000K/4000K/5700K or TW 3000K-5700K	CRI>80 / CRI>90	MacAdam step 3	UGR<22/UGR<19	Osram	ON-OFF/DALI 2 /DALI DT8(tunable white)
160-1475	1475mm	W58xH82mm	single light / linkable	220-240VAC	27-47.5W	115lm/w	White/Black/Silver grey	Opal/Micro-prismatic	Osram	3000K/4000K/5700K or TW 3000K-5700K	CRI>80 / CRI>90	MacAdam step 3	UGR<22/UGR<19	Osram	ON-OFF/DALI 2 /DALI DT8(tunable white)
160-1545	1545mm	W58xH82mm	single light / linkable	220-240VAC	28-49.5W	115lm/w	White/Black/Silver grey	Opal/Micro-prismatic	Osram	3000K/4000K/5700K or TW 3000K-5700K	CRI>80 / CRI>90	MacAdam step 3	UGR<22/UGR<19	Osram	ON-OFF/DALI 2 /DALI DT8(tunable white)
160-1615	1615mm	W58xH82mm	single light / linkable	220-240VAC	29.5-52W	115lm/w	White/Black/Silver grey	Opal/Micro-prismatic	Osram	3000K/4000K/5700K or TW 3000K-5700K	CRI>80 / CRI>90	MacAdam step 3	UGR<22/UGR<19	Osram	ON-OFF/DALI 2 /DALI DT8(tunable white)
160-1685	1685mm	W58xH82mm	single light / linkable	220-240VAC	31-54W	115lm/w	White/Black/Silver grey	Opal/Micro-prismatic	Osram	3000K/4000K/5700K or TW 3000K-5700K	CRI>80 / CRI>90	MacAdam step 3	UGR<22/UGR<19	Osram	ON-OFF/DALI 2 /DALI DT8(tunable white)
160-1755	1755mm	W58xH82mm	single light / linkable	220-240VAC	32-56.5W	115lm/w	White/Black/Silver grey	Opal/Micro-prismatic	Osram	3000K/4000K/5700K or TW 3000K-5700K	CRI>80 / CRI>90	MacAdam step 3	UGR<22/UGR<19	Osram	ON-OFF/DALI 2 /DALI DT8(tunable white)
160-1825	1825mm	W58xH82mm	single light / linkable	220-240VAC	33.5-58.5W	115lm/w	White/Black/Silver grey	Opal/Micro-prismatic	Osram	3000K/4000K/5700K or TW 3000K-5700K	CRI>80 / CRI>90	MacAdam step 3	UGR<22/UGR<19	Osram	ON-OFF/DALI 2 /DALI DT8(tunable white)
160-1895	1895mm	W58xH82mm	single light / linkable	220-240VAC	35-61W	115lm/w	White/Black/Silver grey	Opal/Micro-prismatic	Osram	3000K/4000K/5700K or TW 3000K-5700K	CRI>80 / CRI>90	MacAdam step 3	UGR<22/UGR<19	Osram	ON-OFF/DALI 2 /DALI DT8(tunable white)
160-1965	1965mm	W58xH82mm	single light / linkable	220-240VAC	36-63W	115lm/w	White/Black/Silver grey	Opal/Micro-prismatic	Osram	3000K/4000K/5700K or TW 3000K-5700K	CRI>80 / CRI>90	MacAdam step 3	UGR<22/UGR<19	Osram	ON-OFF/DALI 2 /DALI DT8(tunable white)
160-2035	2035mm	W58xH82mm	single light / linkable	220-240VAC	37.5-65.5W	115lm/w	White/Black/Silver grey	Opal/Micro-prismatic	Osram	3000K/4000K/5700K or TW 3000K-5700K	CRI>80 / CRI>90	MacAdam step 3	UGR<22/UGR<19	Osram	ON-OFF/DALI 2 /DALI DT8(tunable white)
160-2105	2105mm	W58xH82mm	single light / linkable	220-240VAC	39-67.5W	115lm/w	White/Black/Silver grey	Opal/Micro-prismatic	Osram	3000K/4000K/5700K or TW 3000K-5700K	CRI>80 / CRI>90	MacAdam step 3	UGR<22/UGR<19	Osram	ON-OFF/DALI 2 /DALI DT8(tunable white)
160-2175	2175mm	W58xH82mm	single light / linkable	220-240VAC	40-70W	115lm/w	White/Black/Silver grey	Opal/Micro-prismatic	Osram	3000K/4000K/5700K or TW 3000K-5700K	CRI>80 / CRI>90	MacAdam step 3	UGR<22/UGR<19	Osram	ON-OFF/DALI 2 /DALI DT8(tunable white)



Item	Length	Section size	Link	Voltage	Power	System Efficacy	Color	Optics	LEDs	CCT	CRI	Color consistency	UGR	Driver	Control
160-2245	2245mm	W58xH82mm	single light / linkable	220-240VAC	41-72W	115lm/w	White/Black/Silver grey	Opal/Micro-prismatic	Osram	3000K/4000K/5700K or TW 3000K-5700K	CRI>80 / CRI>90	MacAdam step 3	UGR<22/UGR<19	Osram	ON-OFF/DALI 2 /DALI DT8(tunable white)
160-2315	2315mm	W58xH82mm	single light / linkable	220-240VAC	42.5-53W	115lm/w	White/Black/Silver grey	Opal/Micro-prismatic	Osram	3000K/4000K/5700K or TW 3000K-5700K	CRI>80 / CRI>90	MacAdam step 3	UGR<22/UGR<19	Osram	ON-OFF/DALI 2 /DALI DT8(tunable white)
160-2385	2385mm	W58xH82mm	single light / linkable	220-240VAC	44-55W	115lm/w	White/Black/Silver grey	Opal/Micro-prismatic	Osram	3000K/4000K/5700K or TW 3000K-5700K	CRI>80 / CRI>90	MacAdam step 3	UGR<22/UGR<19	Osram	ON-OFF/DALI 2 /DALI DT8(tunable white)
160-2455	2455mm	W58xH82mm	single light / linkable	220-240VAC	45.5-57W	115lm/w	White/Black/Silver grey	Opal/Micro-prismatic	Osram	3000K/4000K/5700K or TW 3000K-5700K	CRI>80 / CRI>90	MacAdam step 3	UGR<22/UGR<19	Osram	ON-OFF/DALI 2 /DALI DT8(tunable white)

Item	Length	Section size	Link	Voltage	Power	System Efficacy	Color	Optics	LEDs	CCT	CRI	Color consistency	UGR	Driver	Control
160-L090	295x295mm	W58xH82mm	single light / linkable	220-240VAC	10-18W	115lm/w	White/Black/Silver grey	Opal/Micro-prismatic	Osram	3000K/4000K/5700K or TW 3000K-5700K	CRI>80 / CRI>90	MacAdam step 3	UGR<22/UGR<19	Osram	ON-OFF/DALI 2 /DALI DT8(tunable white)
160-L120	305x305mm	W58xH82mm	single light / linkable	220-240VAC	10-18W	115lm/w	White/Black/Silver grey	Opal/Micro-prismatic	Osram	3000K/4000K/5700K or TW 3000K-5700K	CRI>80 / CRI>90	MacAdam step 3	UGR<22/UGR<19	Osram	ON-OFF/DALI 2 /DALI DT8(tunable white)
160-L060	305x305mm	W58xH82mm	single light / linkable	220-240VAC	10-18W	115lm/w	White/Black/Silver grey	Opal/Micro-prismatic	Osram	3000K/4000K/5700K or TW 3000K-5700K	CRI>80 / CRI>90	MacAdam step 3	UGR<22/UGR<19	Osram	ON-OFF/DALI 2 /DALI DT8(tunable white)
160-L150	305x305mm	W58xH82mm	single light / linkable	220-240VAC	10-18W	115lm/w	White/Black/Silver grey	Opal/Micro-prismatic	Osram	3000K/4000K/5700K or TW 3000K-5700K	CRI>80 / CRI>90	MacAdam step 3	UGR<22/UGR<19	Osram	ON-OFF/DALI 2 /DALI DT8(tunable white)

Item	Length	Section size	Link	Voltage	Power	System Efficacy	Color	Optics	LEDs	CCT	CRI	Color consistency	UGR	Driver	Control
160-T090	531x295mm	W58xH82mm	single light / linkable	220-240VAC	15.5-29W	115lm/w	White/Black/Silver grey	Opal/Micro-prismatic	Osram	3000K/4000K/5700K or TW 3000K-5700K	CRI>80 / CRI>90	MacAdam step 3	UGR<22/UGR<19	Osram	ON-OFF/DALI 2 /DALI DT8(tunable white)
160-Y120	322mm/Arm	W58xH82mm	single light / linkable	220-240VAC	15.5-29W	115lm/w	White/Black/Silver grey	Opal/Micro-prismatic	Osram	3000K/4000K/5700K or TW 3000K-5700K	CRI>80 / CRI>90	MacAdam step 3	UGR<22/UGR<19	Osram	ON-OFF/DALI 2 /DALI DT8(tunable white)

Item	Length	Section size	Link	Voltage	Power	System Efficacy	Color	Optics	LEDs	CCT	CRI	Color consistency	UGR	Driver	Control
160-C090	531x531mm	W58xH82mm	single light / linkable	220-240VAC	20.5-36W	115lm/w	White/Black/Silver grey	Opal/Micro-prismatic	Osram	3000K/4000K/5700K or TW 3000K-5700K	CRI>80 / CRI>90	MacAdam step 3	UGR<22/UGR<19	Osram	ON-OFF/DALI 2 /DALI DT8(tunable white)
160-C060	531x531mm	W58xH82mm	single light / linkable	220-240VAC	20.5-36W	115lm/w	White/Black/Silver grey	Opal/Micro-prismatic	Osram	3000K/4000K/5700K or TW 3000K-5700K	CRI>80 / CRI>90	MacAdam step 3	UGR<22/UGR<19	Osram	ON-OFF/DALI 2 /DALI DT8(tunable white)

*Options:
 -Presence and light sensors
 -Emergency: 1h or 3h
 -2700k or other CCT
 -100-277VAC

*The length mentioned above means the profile length without the end cap,for general version,each end cap is 3mm long;
 for trim recessed version, each end cap is 9.5mm long.

*There may be differences in the dimensions for dimmable and non-dimmable corners,the dimensions in the parameter table are for the non-dimmable version

Specification of different length and current

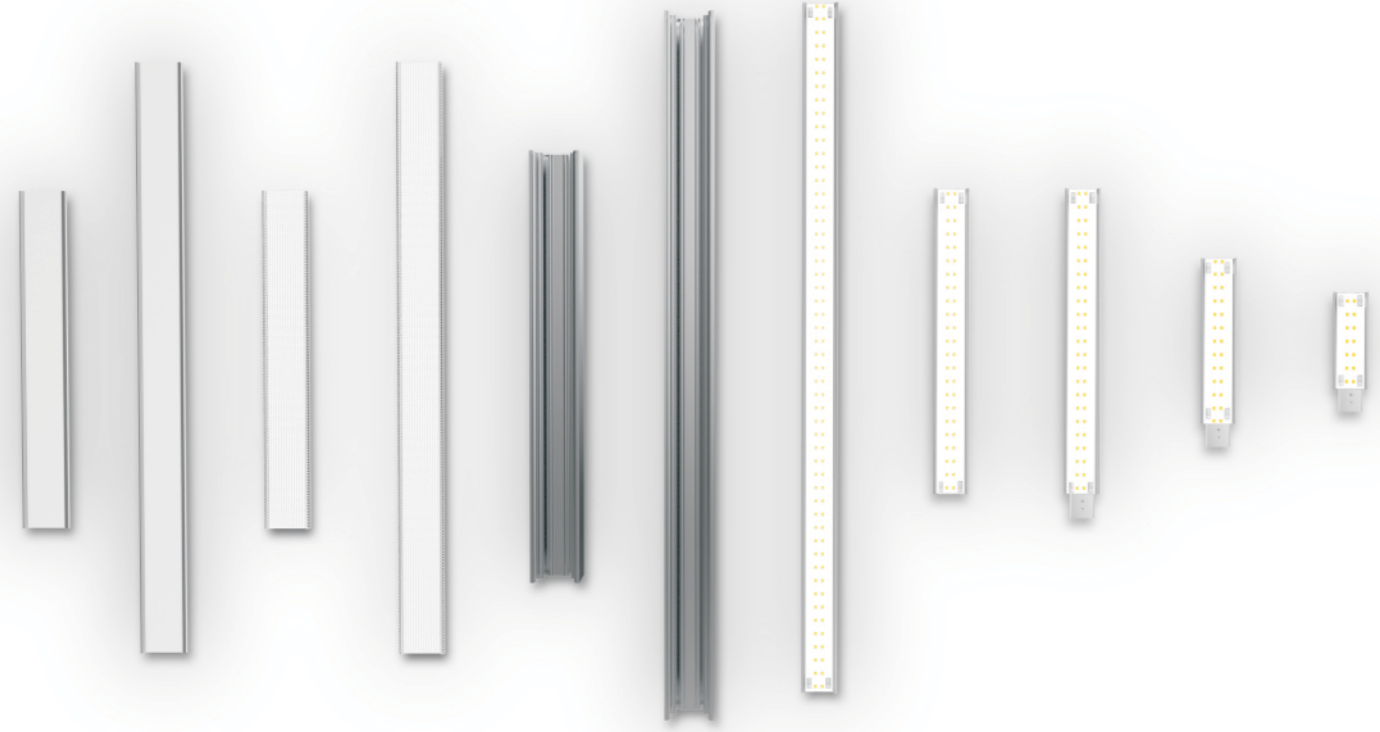
length (mm)	@350mA		@300mA		@250mA		@200mA	
	Power(W)	lumen	Power(W)	lumen	Power(W)	lumen	Power(W)	lumen
565	18.0	2070	15.4	1821	12.9	1543	10.3	1255
635	20.3	2329	17.4	2048	14.5	1736	11.6	1412
705	22.5	2588	19.3	2276	16.1	1929	12.9	1569
775	24.8	2846	21.2	2503	17.7	2121	14.1	1725
845	27.0	3105	23.1	2731	19.3	2314	15.4	1882
915	29.3	3364	25.1	2958	20.9	2507	16.7	2039
985	31.5	3623	27.0	3186	22.5	2700	18.0	2196
1055	33.8	3881	28.9	3414	24.1	2893	19.3	2353
1125	36.0	4140	30.9	3641	25.7	3086	20.6	2510
1195	38.3	4399	32.8	3869	27.3	3279	21.9	2667
1265	40.5	4658	34.7	4096	28.9	3471	23.1	2823
1335	42.8	4916	36.6	4324	30.5	3664	24.4	2980
1405	45.0	5175	38.6	4551	32.1	3857	25.7	3137
1475	47.3	5434	40.5	4779	33.8	4050	27.0	3294
1545	49.5	5693	42.4	5007	35.4	4243	28.3	3451
1615	51.8	5951	44.4	5234	37.0	4436	29.6	3608
1685	54.0	6210	46.3	5462	38.6	4629	30.9	3765
1755	56.3	6469	48.2	5689	40.2	4821	32.1	3921
1825	58.5	6728	50.1	5917	41.8	5014	33.4	4078
1895	60.8	6986	52.1	6144	43.4	5207	34.7	4235
1965	63.0	7245	54.0	6372	45.0	5400	36.0	4392
2035	65.3	7504	55.9	6600	46.6	5593	37.3	4549
2105	67.5	7763	57.9	6827	48.2	5786	38.6	4706
2175	69.8	8021	59.8	7055	49.8	5979	39.9	4863
2245	72.0	8280	61.7	7282	51.4	6171	41.1	5019
2315	N/A	N/A	N/A	N/A	53.0	6364	42.4	5176
2385	N/A	N/A	N/A	N/A	54.7	6561	43.7	5337
2455	N/A	N/A	N/A	N/A	57.0	6844	45.6	5567

*Lumen is based on completed linear light.
 (modules are in the profile, and covered by diffuser)

*There might be 5% tolerance of Power,
 due to the Vr value of Osram LEDs changing while the current changing.



Do It Yourself in one minute



Thanks to the modular design, and tool-free a DIY a linear light within **1 minute** become possible.

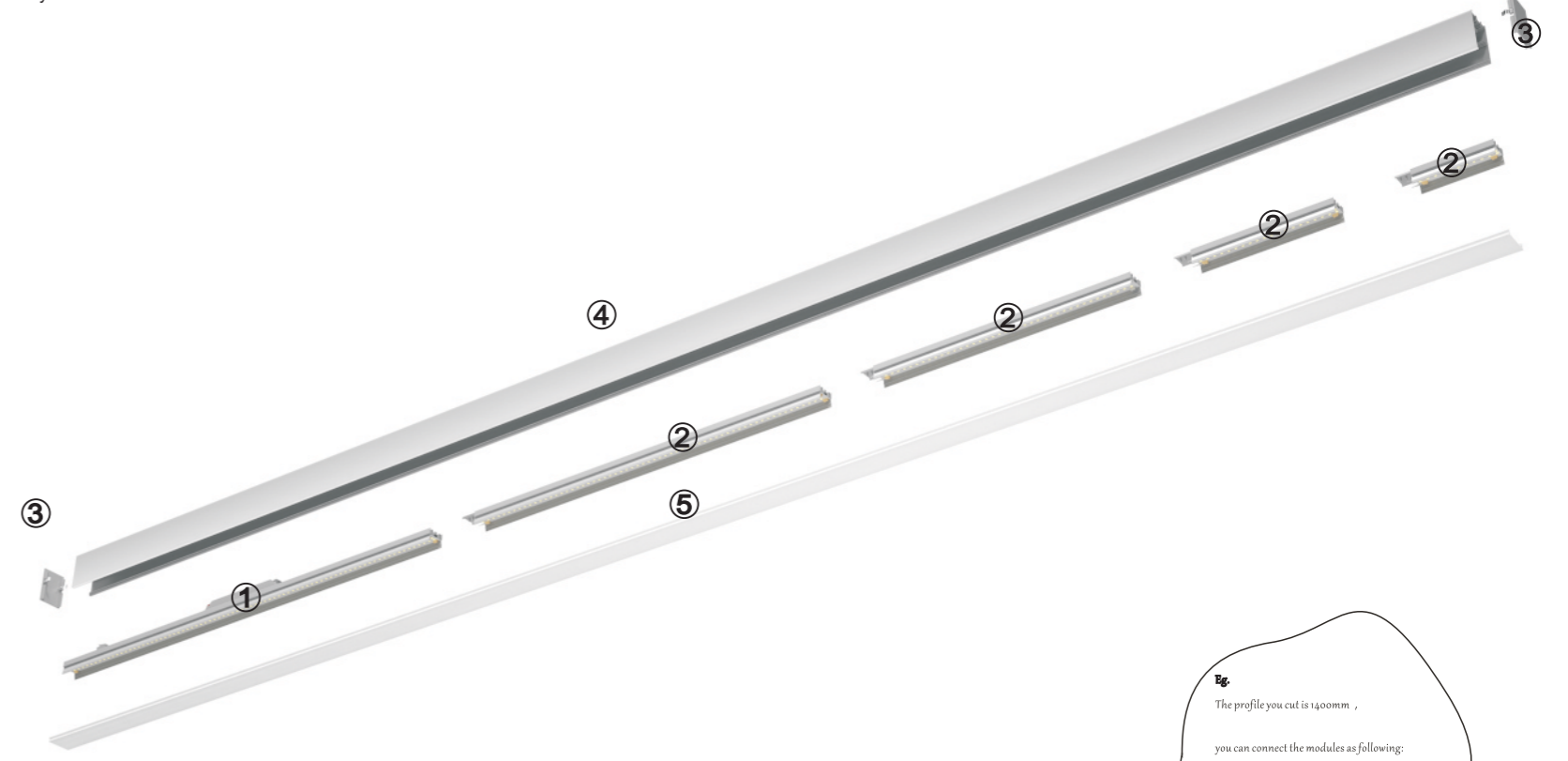
No wiring needed

No PCB or driver assembly needed

Easy to make inventory

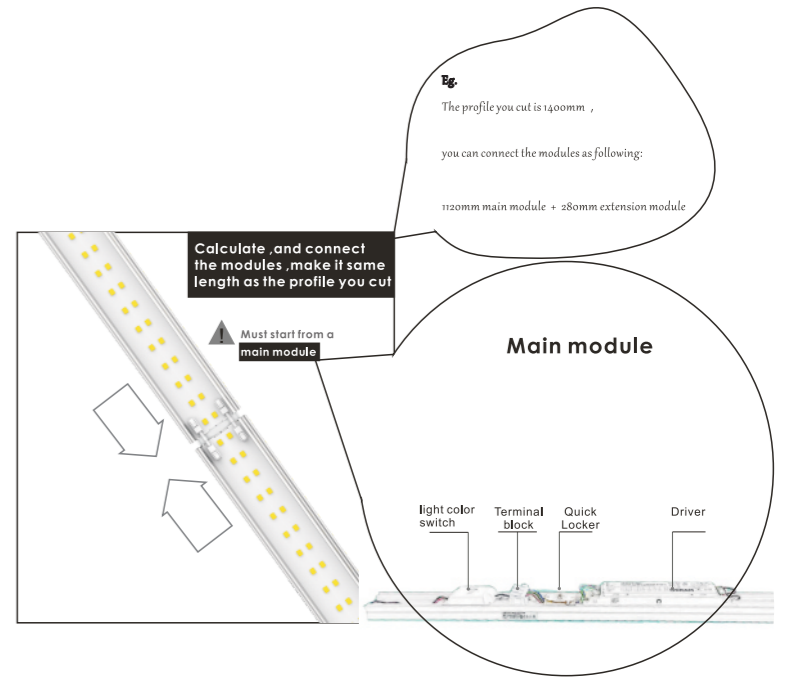
Tool free except a normal cutting machine

Flexible to customize linear projects



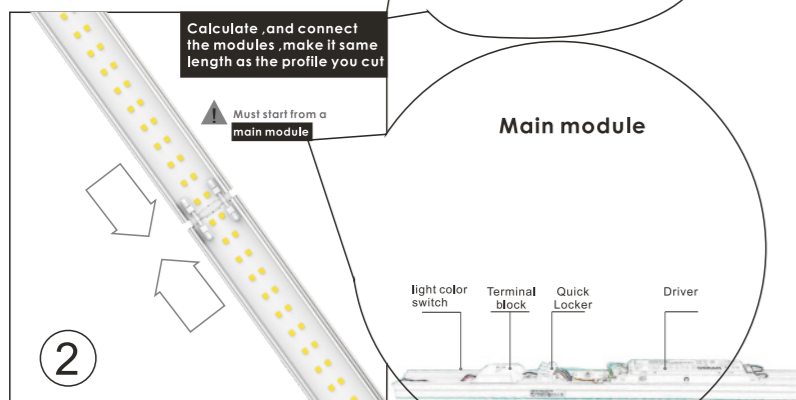
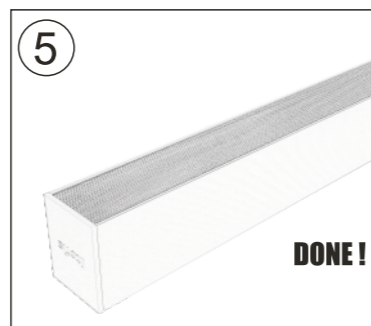
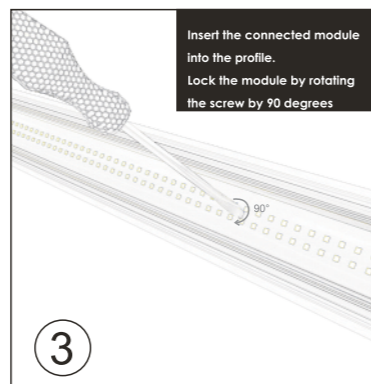
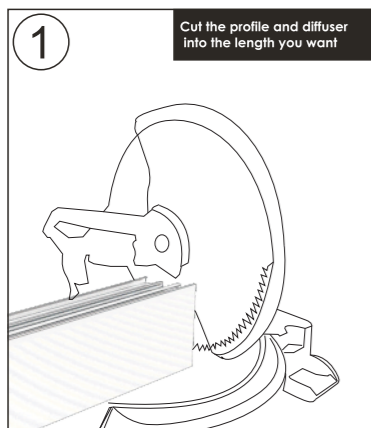
- ① Main LED module(LED insert) with OSRAM LED, OSRAM driver
- ② Extension LED module(LED insert) with OSRAM LED, No driver needed
- ③ End Cap(Tool free)
- ④ Profile (available from 2.5m to 6m)
- ⑤ Diffuser(available from 2.5m to 6m)

* Main led modules are equipped with OSRAM LED, PCB, and OSRAM Driver
 * Extension LED modules are equipped with OSRAM LED and PCB, no driver needed
 * The minimum extension LED module is 0.7M (70mm)



Assembly instruction

Five easy steps to finish a perfect linear light



Main module

main modules has been equipped LED driver, and LEDs

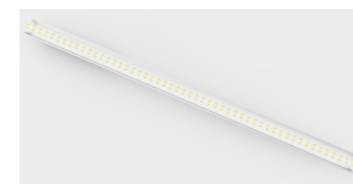
***OSRAM Driver**
***OSRAM LED**

560mm Main module



Part No.	Description	Driver	LED	Power	Light color	CCT	Lumen
160M-560-WW	18W MAIN MODULE	OSRAM	OSRAM	18W	warm white	3000K	2790lm
160M-560-PW	18W MAIN MODULE	OSRAM	OSRAM	18W	Pure white	4000K	2880lm
160M-560-CW	18W MAIN MODULE	OSRAM	OSRAM	18W	Cool white	5700K	2970lm

1120mm main module



Part No.	Description	Driver	LED	Power	Light color	CCT	Lumen
160M-1120-WW	36W MAIN MODULE	OSRAM	OSRAM	36W	warm white	3000K	5580lm
160M-1120-PW	36W MAIN MODULE	OSRAM	OSRAM	36W	Pure white	4000K	5760lm
160M-1120-CW	36W MAIN MODULE	OSRAM	OSRAM	36W	Cool white	5700K	5940lm

Extension module

Extension modules has been equipped LEDs, and they have no driver needed, since they can work by sharing the driver on main module. ***OSRAM LED**

70mm Extension module

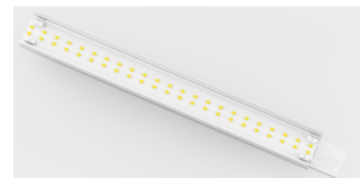


Part No.	Description	Driver	LED	Power	Light color	CCT	Lumen
160X-70-WW	2.3W EXTENSION MODULE	N/A	OSRAM	2.3W	warm white	3000K	356lm
160X-70-PW	2.3W EXTENSION MODULE	N/A	OSRAM	2.3W	Pure white	4000K	368lm
160X-70-CW	2.3W EXTENSION MODULE	N/A	OSRAM	2.3W	Cool white	5700K	379lm

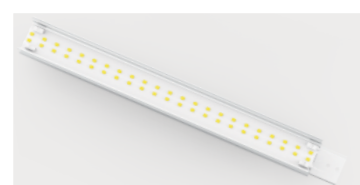
140mm Extension module



Part No.	Description	Driver	LED	Power	Light color	CCT	Lumen
160X-140-WW	4.5W EXTENSION MODULE	N/A	OSRAM	4.5W	warm white	3000K	698lm
160X-140-PW	4.5W EXTENSION MODULE	N/A	OSRAM	4.5W	Pure white	4000K	720lm
160X-140-CW	4.5W EXTENSION MODULE	N/A	OSRAM	4.5W	Cool white	5700K	742lm

280mm
Extension module

Part No.	Description	Driver	LED	Power	Light color	CCT	Lumen
160X-280-WW	9W EXTENSION MODULE	N/A	OSRAM	9W	warm white	3000K	1395lm
160X-280-PW	9W EXTENSION MODULE	N/A	OSRAM	9W	Pure white	4000K	1400lm
160X-280-CW	9W EXTENSION MODULE	N/A	OSRAM	9W	Cool white	5700K	1485lm

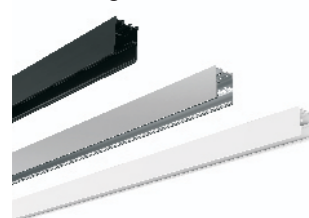
560mm
Extension module

Part No.	Description	Driver	LED	Power	Light color	CCT	Lumen
160X-560-WW	18W EXTENSION MODULE	N/A	OSRAM	18W	warm white	3000K	2790lm
160X-560-PW	18W EXTENSION MODULE	N/A	OSRAM	18W	Pure white	4000K	2880lm
160X-560-CW	18W EXTENSION MODULE	N/A	OSRAM	18W	Cool white	5700K	1485lm

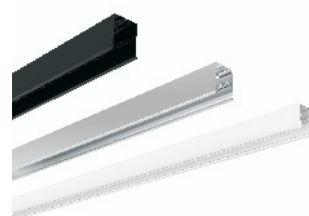
*3CCT(warm white,pure white,cool white) switchable modules are optional

Part list

2500mm general Profile



2500mm trim recessed Profile



*General profile is for Suspended,surface mounted,and trimless recseeed

Part No.	Description	Material	Color	Width*height	Length
160P-25-W	Profile	Aluminum	White	58*82MM	2500mm
160P-25-B	Profile	Aluminum	Black	58*82MM	2500mm
160P-25-S	Profile	Aluminum	Silver	58*82MM	2500mm

*The modules and diffusers for trim recessed profile are same as the ones for general profile

Part No.	Description	Material	Color	Width*height	Length
160PR-25-W	Profile with recessed trim	Aluminum	White	58*82MM	2500mm
160PR-25-B	Profile with recessed trim	Aluminum	Black	58*82MM	2500mm
160PR-25-S	Profile with recessed trim	Aluminum	Silver	58*82MM	2500mm



2500mm micro-prismatic diffuser

Part No.	Description	Material	Length
160D-25-M	Micro prismatic diffuser	PMMA	2500mm

2500mm Opal diffuser

Part No.	Description	Material	Length
160D-25-O	Opal diffuser	PMMA	2500mm

No Screw visible end cap

Part No.	Description	Material	color
160EC-W	No Screw visible end cap	Aluminum	white
160EC-B	No Screw visible end cap	Aluminum	Black
160EC-S	No Screw visible end cap	Aluminum	Silver



Trimless recessed kits

Part No.	Description	Material
160RK	Trimless recessed kit	stainless

Trim recessed kits

Part No.	Description	Material
160RTK	Trim recessed kit	stainless



Suspension kits

Part No.	Description	Length
160SW	Suspension wire	2 meter



Suspension Canopy kits

Part No.	Description	Length
160SC	Canopy with suspension wire	2 meter



Surface mounted kits

Part No.	Description	Material
160SM	Surface mounted kits	stainless



Fast connection kits

Part No.	Description	Material
160CK-3	3PIN Fast connection kits	stainless
160CK-5	3PIN Fast connection kits	stainless



Transparent cable

Part No.	Description	Material
160TC-3	3 core transparent cable	Copper
160TC-5	5 core transparent cable	Copper

Introduction of modules

Main modules

1120mm main module

560mm main module

Extension modules

560mm

280mm

140mm

70mm

Possibilities of 560mm main module
@350mA,300mA,250mA,200mA

560mm main module =560mm

560mm main module 70mm =630mm

560mm main module 140mm =700mm

560mm main module 140mm 70mm =770mm

560mm main module 280mm =840mm

560mm main module 280mm 70mm =910mm

560mm main module 280mm 140mm =980mm

560mm main module 280mm 140mm 70mm =1050mm

560mm main module 560mm =1120mm

560mm main module 560mm 70mm =1190mm

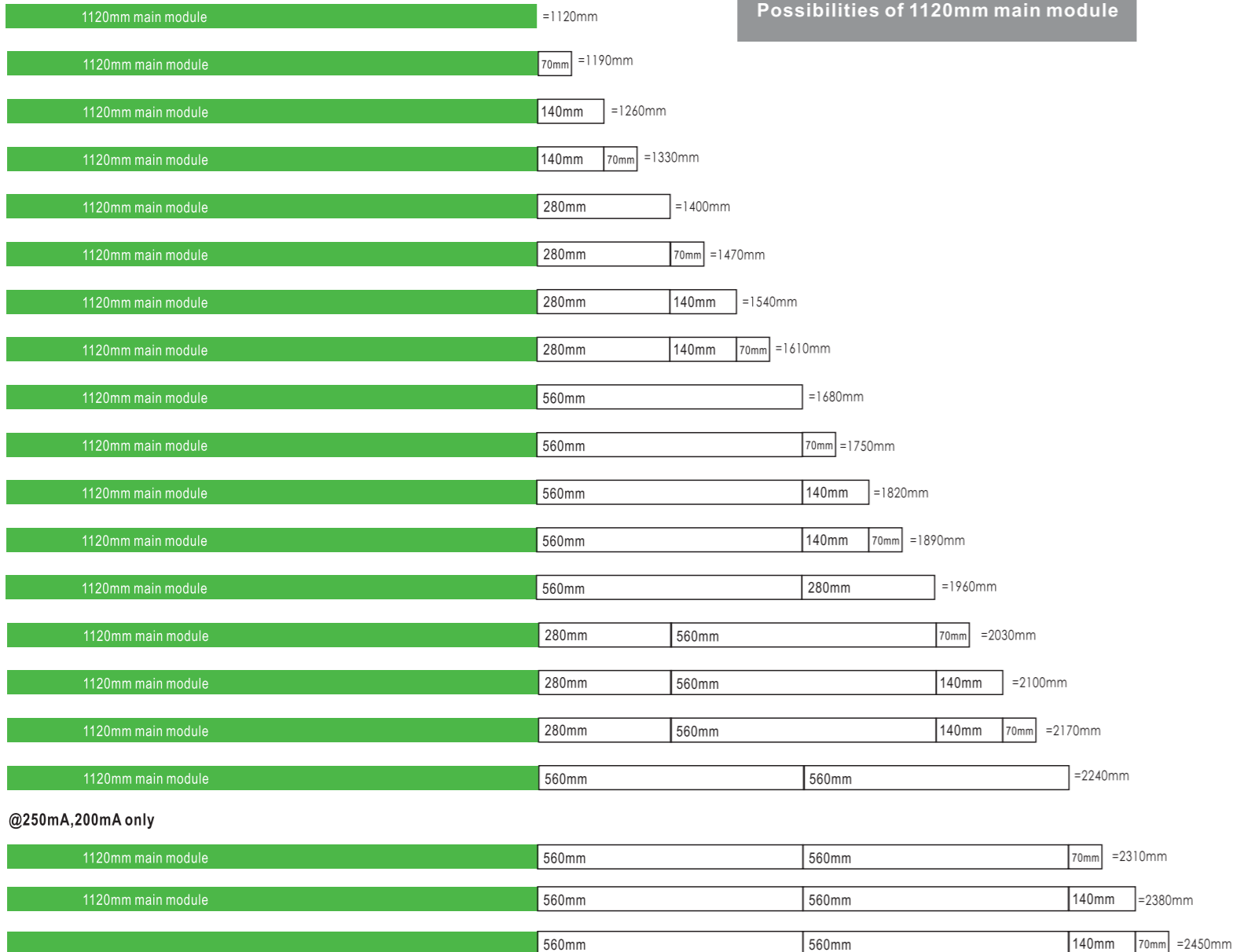
560mm main module 560mm 140mm =1260mm

560mm main module 560mm 140mm 70mm =1330mm

560mm main module 560mm 280mm =1400mm

@350mA,300mA,250mA,200mA

Possibilities of 1120mm main module



Specification of different length and Power

Length (mm)	@350mA		@300mA		@250mA		@200mA	
	Power(w)	Lumen	Power(w)	Lumen	Power(w)	Lumen	Power(w)	Lumen
560	18.0	2070	15.4	1821	12.9	1543	10.3	1255
630	20.3	2329	17.4	2048	14.5	1736	11.6	1412
700	22.5	2588	19.3	2276	16.1	1929	12.9	1569
770	24.8	2846	21.2	2503	17.7	2121	14.1	1725
840	27.0	3105	23.1	2731	19.3	2314	15.4	1882
910	29.3	3364	25.1	2958	20.9	2507	16.7	2039
980	31.5	3623	27.0	3186	22.5	2700	18.0	2196
1050	33.8	3881	28.9	3414	24.1	2893	19.3	2353
1120	36.0	4140	30.9	3641	25.7	3086	20.6	2510
1190	38.3	4399	32.8	3869	27.3	3279	21.9	2667
1260	40.5	4658	34.7	4096	28.9	3471	23.1	2823
1330	42.8	4916	36.6	4324	30.5	3664	24.4	2980
1400	45.0	5175	38.6	4551	32.1	3857	25.7	3137
1470	47.3	5434	40.5	4779	33.8	4050	27.0	3294
1540	49.5	5693	42.4	5007	35.4	4243	28.3	3451
1610	51.8	5951	44.4	5234	37.0	4436	29.6	3608
1680	54.0	6210	46.3	5462	38.6	4629	30.9	3765
1750	56.3	6469	48.2	5689	40.2	4821	32.1	3921
1820	58.5	6728	50.1	5917	41.8	5014	33.4	4078
1890	60.8	6986	52.1	6144	43.4	5207	34.7	4235
1960	63.0	7245	54.0	6372	45.0	5400	36.0	4392
2030	65.3	7504	55.9	6600	46.6	5593	37.3	4549
2100	67.5	7763	57.9	6827	48.2	5786	38.6	4706
2170	69.8	8021	59.8	7055	49.8	5979	39.9	4863
2240	72.0	8280	61.7	7282	51.4	6171	41.1	5019
2310	N/A	N/A	N/A	N/A	53.0	6364	42.4	5176
2380	N/A	N/A	N/A	N/A	54.7	6561	43.7	5337
2450	N/A	N/A	N/A	N/A	57.0	6844	45.6	5569

*Lumen is based on completed linear light. (modules are in the profile, and covered by diffuser)

*There might be 10% tolerance of Power and Lumen due to the Vf value of Osram LEDs changing while the current changing.

* All data are based Osram driver ,and Osram LEDs (CRI>80)